

Origin of Advantech Video Wall Controller

When Advantech Meets Matrox

Advantech, one of the world leaders in industrial computers, not only provides global customers with high-tech and quality embedded system platforms, but also fulfills its customers' needs with the value added services of on-demand production, global logistics, and technical support. Matrox, one of the industry leading suppliers of display solution provider, is well known for next generation video wall solutions based on its high performance, high flexibility, and multi-channel video signal I/O Mura MPX series products. Aiming at offering premium solutions for video wall system integrators, Advantech and Matrox will jointly launch a series of video wall controllers by integrating their industrial server and Mura MPX graphic cards with strict and comprehensive compatibility, performance, and reliability verification and fine tuning. Enhanced by Advantech's global service network, the new partnership will offer video wall integrators with unprecedented turnkey solutions and added value.

ADVANTECH

Enabling an Intelligent Planet

matrox
Graphics for Professionals

What Is Advantech Video Wall Controller ?

An Advantech video wall controller is designed for video wall applications. Being strictly validated by the Matrox laboratory, Advantech video wall controller features Mura MPX Series compatibility, and industrial reliability, key characteristics are listed below.

- Industrial Reliability: System can run stably under 40°C temperature.
- BIOS Optimized: Multiple Mura MPX cards can be recognized by the system and function well.
- Thermal Optimization: No thermal issue even when multiple Mura MPX are installed in the system.
- Data Switch Optimized: Video captured can be displayed anywhere on the video wall.
- Power Solution Optimized: Power supply is sufficient for the system to carry multiple Mura MPX.
- Remote Management: A remote administrator can monitor and control the system by network connection.



What Is Matrox Mura MPX Series?



The Matrox Mura MPX Series redefines the future of collaborative video walls and wall matrix management. Engineered to deliver unparalleled performance, image quality, and scalability, the Mura MPX Series output/input boards feature highly flexible, universal input channels supporting digital and analog signals, plus capabilities for HD image capture and display of uncompressed data and peer-to-peer data transfer. The Mura MPX Series really is an ideal solution for large-scale, multi-channel video wall applications.

Regional Service & Customization Centers

China	Taiwan	Netherlands	Poland	USA/ Canada
Kunshan 86-512-5777-5666	Taipei 886-2-2692-6076	Eindhoven 31-40-267-7000	Warsaw 48-22-33-23-730	Milpitas, CA 1-408-519-3800

Worldwide Offices

Greater China

China	Toll Free	800-810-0345
Beijing		86-10-6298-4346
Shanghai		86-21-3632-1616
Shenzhen		86-755-8212-4222
Chengdu		86-28-8545-0198
Hong Kong		852-2720-5118

Taiwan

Toll Free	0800-777-111
Rueiguang	886-2-2792-7818
Yang Guang	886-2-2792-7818
Shing-Tien	886-2-2218-4567
Taichung	886-4-2378-6250
Kaohsiung	886-7-229-3600
Hsinchu	886-3-543-0569

Asia Pacific

Japan	Toll Free	0800-500-1055
Tokyo		81-3-6802-1021
Osaka		81-6-6267-1887

Korea

Toll Free	080-363-9494
Seoul	82-2-3663-9494

Singapore

Singapore	65-6442-1000
-----------	--------------

Malaysia

Toll Free	1800-88-1809
Kuala Lumpur	60-3-7725-4188
Penang	60-4-537-9188

Indonesia

Jakarta	62-21-769-0525
---------	----------------

Thailand

Bangkok	66-2-248-3140
---------	---------------

India

Toll Free	1800-425-5071
Bangalore	91-80-2545-0206

Australia

Toll Free	1300-308-531
Melbourne	61-3-9797-0100
Sydney	61-2-9476-9300

Europe

Germany	Toll Free	00800-2426-8080
Munich		49-89-12599-0
Düsseldorf		49-2103-97-885-0

France

Paris	33-1-4119-4666
-------	----------------

Italy

Milano	39-02-9544-961
--------	----------------

Benelux & Nordics

Breda	31-76-5233-100
-------	----------------

UK

Reading	44-0118-929-4540
---------	------------------

Poland

Warsaw	48-22-33-23-740/41
--------	--------------------

Russia

Toll Free	8-800-555-01-50
Moscow	7-495-232-1692

Americas

North America	Toll Free	1-800-205-7940
		1-888-576-9668
Cincinnati		1-513-742-8895
Milpitas		1-408-519-3898
Irvine		1-949-429-2500

South America

Toll Free	1-800-467-2415
Mexico	52-55-6275-2777

Brazil

Toll Free	0800-770-5355
Saude-São Paulo	55-11-5592-5355

Advantech Video Wall Controller Solutions

Powered By Matrox® Mura MPX Series

- ✓ Validated by Matrox®
- ✓ Long Life Support
- ✓ Industrial Reliability
- ✓ Intel® Xeon® Computing Power
- ✓ Up To 16GB/s Data Switch Rate
- ✓ Remote Manageability



ADVANTECH

Enabling an Intelligent Planet

About Advantech

Advantech: Enabler of an Intelligent Planet

Founded in 1983, Advantech is a leader in providing trusted innovative embedded and automation products and solutions. Advantech offers comprehensive system integration, hardware, software, customer-centric design services, and global logistics support; all backed by industry-leading front and back office e-business solutions. We cooperate closely with our partners to help provide complete solutions for a wide array of applications across a diverse range of industries. Advantech has always been an innovator in the development and manufacture of high-quality, high-performance computing platforms, and our mission is to empower these innovations by offering trustworthy products and services that enable an intelligent planet. With Advantech, there is no limit to the applications and innovations our products make possible.

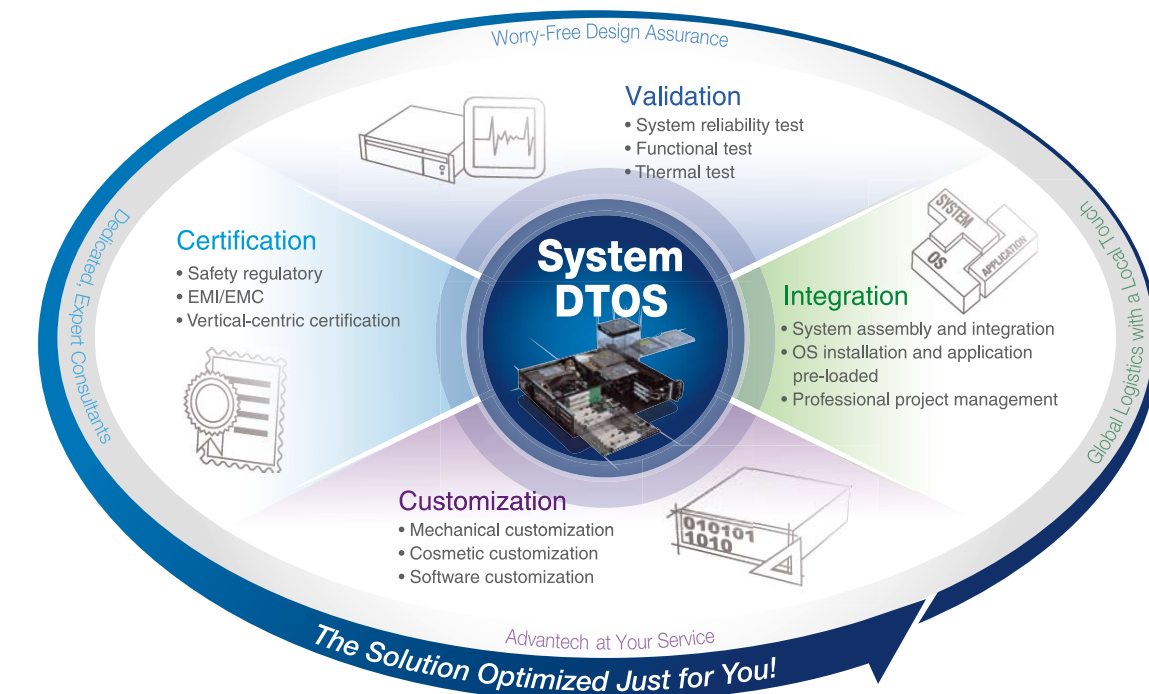
Configure To Order Services

Advantech Configure To Order Services (CTOS) makes industrial computing solutions more accessible by offering web-based configuration tools, comprehensive, complex assembly services with high-mix, low-volume box build and customized assembly, modification, system integration and functional testing services.

- Online intelligent configuration
- Comprehensive approach to complex configuration solutions
- Local customized configuration services
- With 2-year global warranty covering system & integrated peripherals

Design To Order Services

Advantech DTOS (Design To Order Services) is a design service that provides tailor-made systems to meet specific application requirements through the latest cutting-edge technologies, offering different levels of customization, flexible manufacturing, global fulfillment, and post-manufacturing service. System DTOS gives customers the fastest time-to-market, with total cost reduction.



www.advantech.com

Please verify specifications before quoting. This guide is intended for reference purposes only. All product specifications are subject to change without notice. No part of this publication may be reproduced in any form or by any means, electronic, photocopying, recording or otherwise, without prior written permission of the publisher. All brand and product names are trademarks or registered trademarks of their respective companies. © Advantech Co., Ltd. 2012

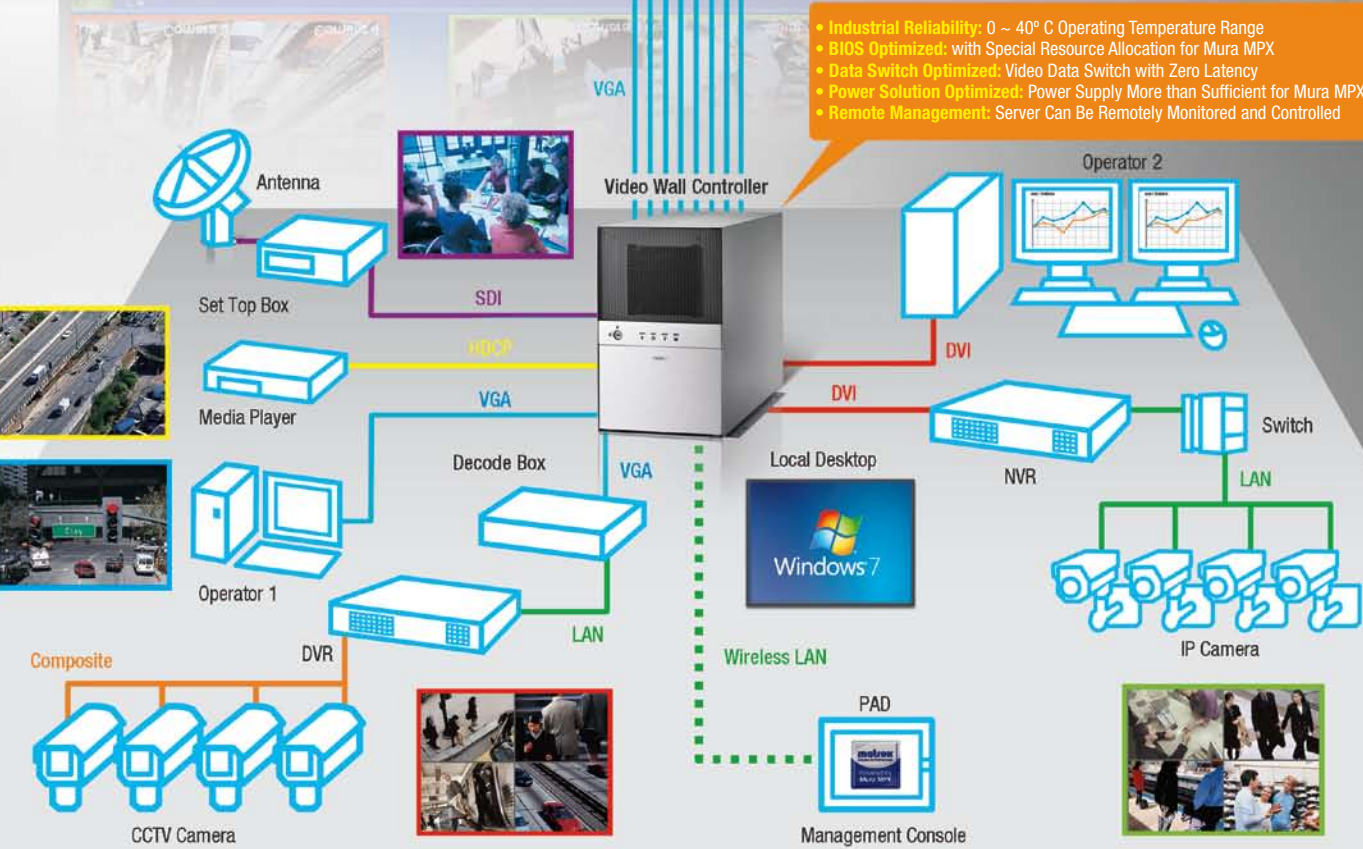
ADVANTECH

Enabling an Intelligent Planet

www.advantech.com

Video Wall Architecture

A video wall, besides being used as a signage display, can also be a powerful control room tool, aggregating, integrating, analyzing and manipulating massive amounts of information from a whole array of sources. In professional applications that require high situational awareness - such as SCADA, emergency dispatch center, transportation, security, oil and energy - a reliable, high performance video wall is really the backbone of the central control room. When equipped with Matrox Mura MPX cards, the Advantech AVS video wall controller is capable of not only handling multiple displays but also of capturing video or graphics streams from a wide range of sources such as PC, NVR, DVR, decoder box, blue ray player, set up box, etc. Once streams are captured, the AVS video wall controller flexibly switches, scales, organizes and displays that content in real time. Powered by Matrox Mura MPX and endowed with industrial reliability, the Advantech AVS video wall controller makes an ideal solution for system integrators or OEMs who need to build high performance video wall systems.



- Industrial Reliability: 0 ~ 40°C Operating Temperature Range
- BIOS Optimized: with Special Resource Allocation for Mura MPX
- Data Switch Optimized: Video Data Switch with Zero Latency
- Power Solution Optimized: Power Supply More than Sufficient for Mura MPX
- Remote Management: Server Can Be Remotely Monitored and Controlled

Matrox Mura MPX Series

Video Wall Controller Boards



- ### Features
- PCI-Express x16 Gen 2 Full-Duplex bandwidth
 - Full HD DVI, Digital, VGA, and video capture - including HDCP
 - Hardware genlock across cards for beautiful, synchronized multi-screen output
 - Edge-overlap (for edge-blending projectors) and Bezel management
 - Supports hardware-based scaling
 - Alpha-blending of captured video
 - Picture-in-picture and multi-source overlap and switching
 - Supports a large stretched desktop and can run local applications

Model	Part Number	Output	Input	Output Resolution		Input Resolution				
				SL-DVI	RGB (VGA)	SL-DVI	RGB (VGA)	Component (VPbPr)	S-Video/Composit	SDI
Mura MPX-4/0	96VG-2G-PE-MA	4	0	2048X1152	2048X1536	-	-	-	-	-
Mura MPX-4/2	96VG-2G-PE-MA1	4	2	2048X1152	2048X1536	1920X1200	2048X1536	1080i	NTSC/PAL/SECAM	-
Mura MPX-4/4	96VG-2G-PE-MA2	4	4	2048X1152	2048X1536	1920X1200	2048X1536	1080i	NTSC/PAL/SECAM	-
Mura MPX-SDI	96VG-1G-PE-MA	2	2	2048X1152	2048X1536	-	-	-	-	1920X1080
Mura MPX-V8	96VG-128M-PE-MA	0	8	-	-	-	-	-	NTSC/PAL/SECAM	-
Mura MPX-V16	96VG-256M-PE-MA	0	16	-	-	-	-	-	NTSC/PAL/SECAM	-

- ### Software
- A variety of software options exist that allow you to manage and take full control of a Matrox Mura MPX enabled video wall. Select the option that best suits your needs.

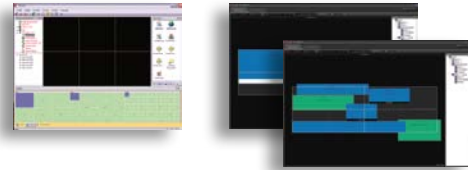
Crestron Certified Integrated Partner Module
Download Free TCP/IP Integrated Partner Module for Crestron Processors and Control Interfaces.
http://www.matrox.com/crestron_mura_module

Matrox is a Crestron Certified Integrated Partner.

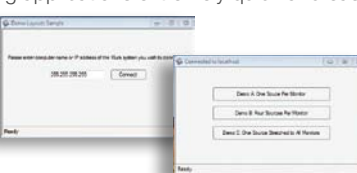
Matrox User and OEM Software
Matrox MuraControl for Windows and Apple iPad tablets for users and OEMs.



3rd-party User and OEM Software
Gives you the option to control Mura with different software features and ergonomics to more closely match your needs.



Matrox TCP/IP and RS-232 Command-based API
Makes creating customized GUIs or embedding video wall control into your own existing applications extremely quick and easy.



Advantech Video Wall Controller

8-Output Solutions



- 7 years Long Life Cycle
- 0~40°C Operating Temperature
- BIOS Optimized
- Data Switch Optimized
- Power Solution Optimized
- Remote Management

AVS-240-00A1E Available Now

- Supported Mura Cards: 2 Standard Mura MPX + 1 Mura MPX-V8/V16
- Maximum Video Inputs: 8 Analog/Digital + 16 Analog
- Maximum Video Outputs: 8 Analog/Digital
- Processor: Intel® Xeon® 1200 series up to 4 cores/8 threads
- Memory: DDR3 1333 MHz (ECC) UDIMM up to 32GB
- 5.25" Drive Bay: 1 External
- 3.5" Drive Bays: 2 Removable, 1 Internal
- Remote Management: IPMI, Advantech Remote Monitoring Utility
- Form Factor: 4U Rack-mount
- 500W 80 Plus Single Power Supply
- Dual GbE LANs

AVS-290-00A1E Available Now

- Supported Mura Cards: 2 Standard Mura MPX
- Maximum Video Inputs: 8 Analog/Digital
- Maximum Video Outputs: 8 Analog/Digital
- Processor: Intel® Xeon® 1200 series up to 4 cores/8 threads
- Memory: DDR3 1333 MHz (ECC) UDIMM up to 32GB
- 5.25" Drive Bay: 1 External
- 3.5" Drive Bays: 2 Removable, 1 Internal
- Remote Management: IPMI, Advantech Remote Monitoring Utility
- Form Factor: Wall-mount/Desktop
- 400W 80 Plus Single Power Supply
- Quad GbE LANs

Advantech Video Wall Controller

20-Output Solutions



- 7 years Long Life Cycle
- 0~40°C Operating Temperature
- BIOS Optimized
- Data Switch Optimized
- Power Solution Optimized
- Remote Management

AVS-540-00A1E Available in Q1 2013

- Supported Mura Cards: 5 Standard Mura MPX
- Maximum Video Inputs: 20 Analog/Digital
- Maximum Video Outputs: 20 Analog/Digital
- Processor: Intel® Xeon® E5 2600 series up to 8 cores/16 threads
- Memory: DDR3 1333/1600MHz (ECC) UDIMM/RDIMM up to 96GB
- 5.25" Drive Bay: 2 External (Optional module for 3 removable 3.5" HDD)
- 3.5" Drive Bay: 1 External (Optional module for 2 removable 2.5" HDD/SSD), 1 Internal
- Remote Management: IPMI, Advantech Remote Monitoring Utility
- Form Factor: 4U Rack-mount
- 700W 80 Plus Single Power Supply
- Dual GbE LANs

AVS-541-00A1E Available in Q3 2013

- Supported Mura Cards: 5 Standard Mura MPX + 11 Mura MPX-V8/V16
- Maximum Video Inputs: 20 Analog/Digital + 176 Analog
- Maximum Video Outputs: 20 Analog/Digital
- Processor: Intel® Xeon® E3-1200V2 series up to 4 cores/8 threads
- Memory: DDR3 1333 MHz (ECC) UDIMM up to 16GB
- 5.25" Drive Bay: 3 External (Optional module for 3 removable 3.5" HDD)
- 3.5" Drive Bay: 1 External (Optional module for 2 removable 2.5" HDD/SSD), 1 Internal
- Remote Management: iAMT, Advantech Remote Monitoring Utility
- Form Factor: 4U Rack-mount
- 810W Front Accessible 3+1 Redundant Power Supply
- Dual GbE LANs

Note: This product is still under development, its specification is not fully settled down.